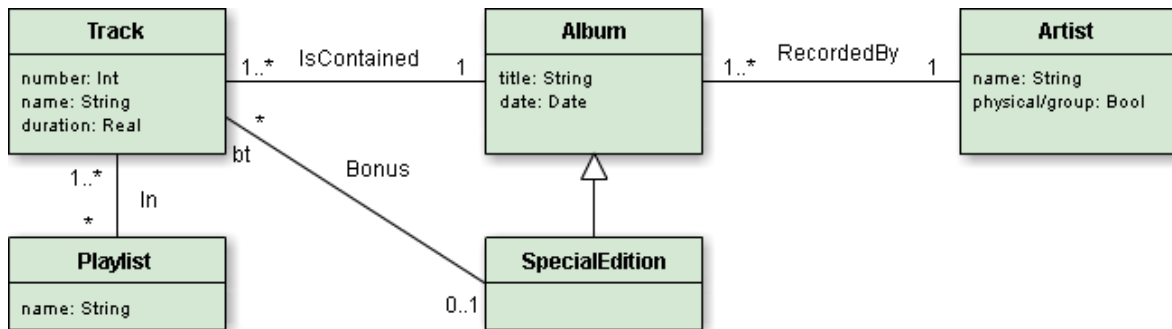


# Playlist schema

## Class Diagram



## Constraints

**context** SpecialEdition **inv** SubsetConstraint:  
self.bt->includesAll(self.track)

**context** Track **inv** TrackKey:

Track.allInstances()->forall(t1,t2 | t1.<>t2 implies t1.number <> t2.number or t1.album <> t2.album)

**context** Playlist **inv** PlaylistKey:

Playlist.allInstances()->isUnique(name)

**context** Album **inv** AlbumKey:

Album.allInstances()->isUnique(title)

**context** Artist **inv** ArtistKey:

Artist.allInstances()->isUnique(name);